

# saferail

Saferail comprises of a series of vertical solid or tubular stanchions and horizontal runs of tube to form a secure handrail system.

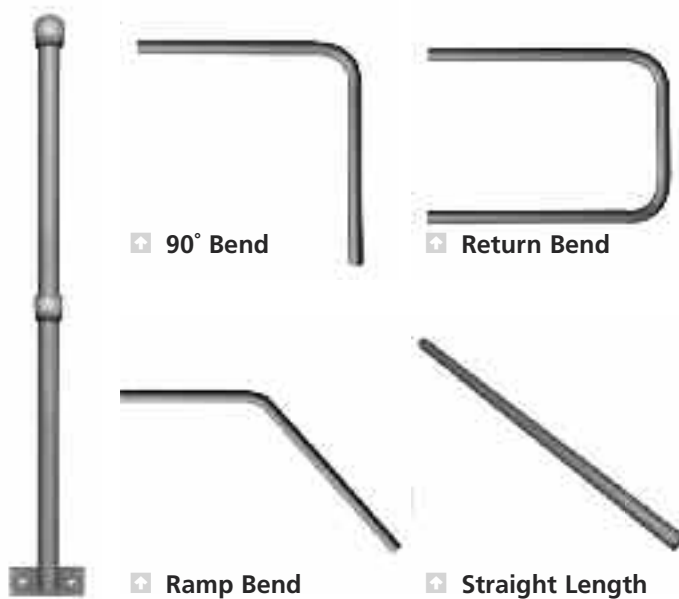
## Stanchions

Stanchions are upright solid forged or tubular posts allowing the horizontal rail to be passed through. Stanchions come with various base plate options and are grub screwed to allow the rail to be secured into position.

Saferail can be specified using one of the following three systems:

## Modular

Standard sections of handrail, available in various shapes and sizes to allow simple handrail systems to be pieced together.



## Stanchion

## Fabricated

For more complicated handrail systems, Lionweld Kennedy offer a full fabrication service. Manufactured and piece marked to the customers requirements, handrail can be made to suit most applications.

## Barrier Rail

Barrier Rail is supplied as a fully welded frame fabricated to suit client specifications. This system is predominately used in offshore installations.

